

HOW TO: Get a VMware Workstation 12 to browse MAC addresses from Windows 10

Are you supporting software that is not compatible with the current Windows operating system?

A Virtual PC is likely your only solution.

SITUATION

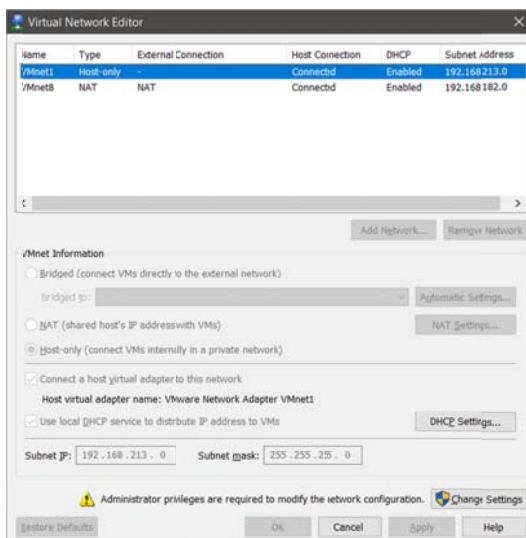
Greg Larson, one of our application engineers, ran into the following situation while installing a new device:

- Went to Windows 10 Pro.
- Had to start using VMware Workstation 12.
- To set up an IP address for the brand new device, he needed the ability to browse Siemens MAC addresses.

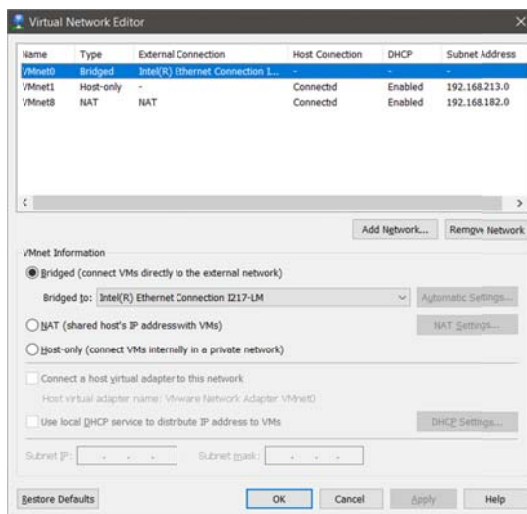
SOLUTION

Below are Greg's steps for getting the VMware Workstation 12 to browse MAC addresses from Windows 10:

1. You will need to hard set some IP address in your Host computer (the actual computer itself) before you try to go online with your Siemens hardware.
 - The address must have the same first 3 Octets of your Siemens hardware you are trying to connect.
For example: if your PLC is 192.168.0.0, your PC has to be 192.168.0.xxx (xxx can be any number from 1-255 – something unique)
 - Please feel free to call IES, if you have any questions during this step.
2. Open VMware Workstation 12.
3. Without any Virtual PC running go to Edit → Virtual Network Editor



4. Once the Virtual Network Editor window opens, go to the bottom (under Administrator Privileges) to make the required modifications to the network configuration, and click the **Change Settings** button.



5. Select VMnet0 (highlighted in picture above) and map it to your Network adapter in your actual Computer (Host). The computer used in this case has the Intel® PRO/1000 MT Network Connection.
6. Click OK.
7. After the window closes, play your VM image.
 - Once it starts it will act just like a normal PC.
 - You can now browse MAC addresses so see what IP addresses you are trying to connect to.
 - Now you can download to a piece of Siemens hardware right out of the box.
 - Once you have done that you can go online like normal because the Siemens software has put an IP address on the Siemens hardware.
 - Without hard setting a local IP address (On Virtual Machine Network adapter) you won't be able to go online with a current project.

PLEASE NOTE: If you have the Siemens TIA Portal software, it will temporarily assign an IP address for you to go online with your Siemens hardware so you can go online until you reboot your virtual PC and it will have to do it again the next time.

If you have any difficulty with this procedure, please contact one of your branches, to be connected to one of our IES applications engineers, who will be happy to help!